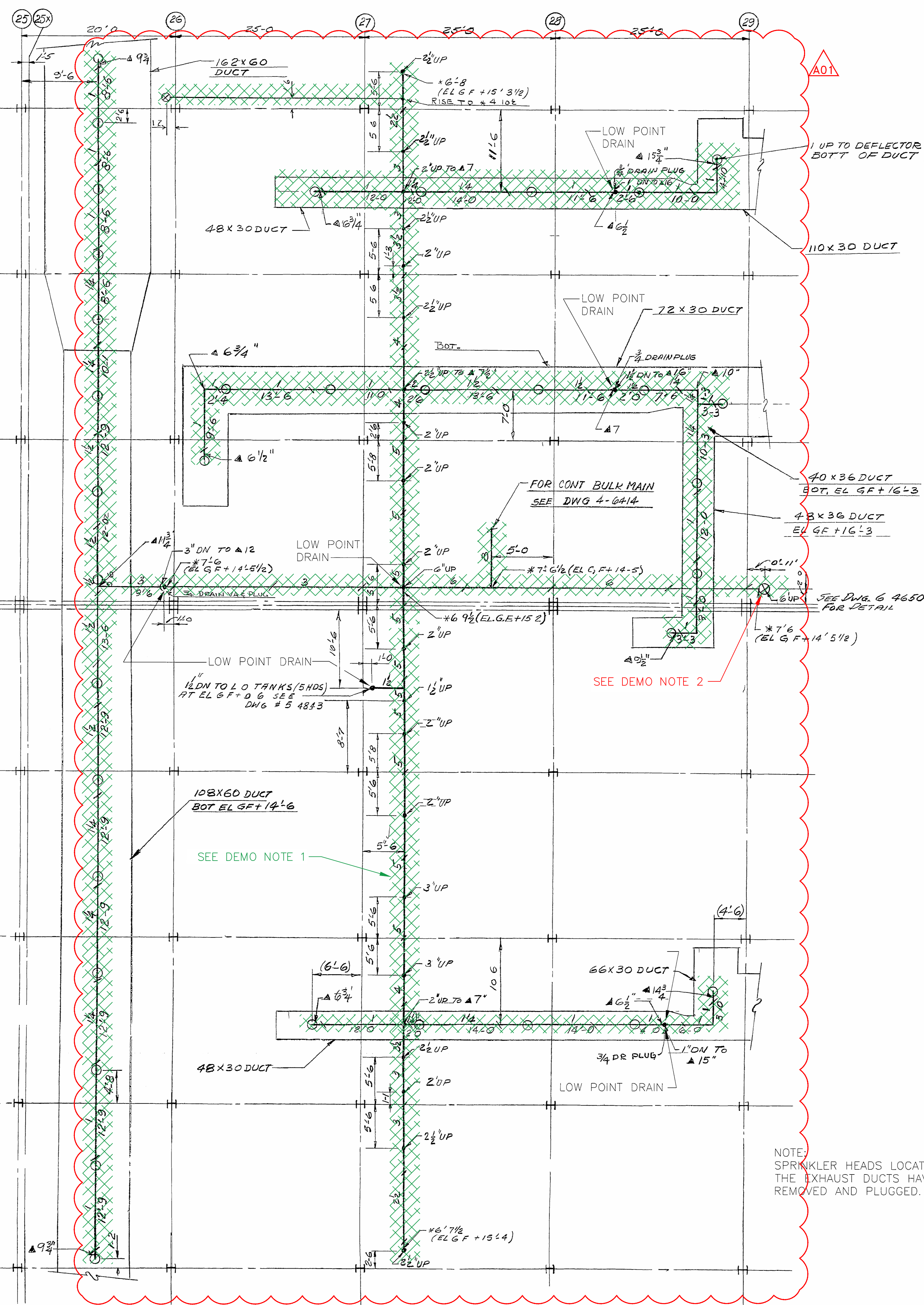


SPRINKLER LAYOUT - GROUND FLOOR
CEILING AND INSIDE DUCTS
SCALE 1/8" = 1'-0"

ALL RISER NIPPLES ARE 1" UNLESS NOTED

SPRINKLER SYMBOLS	
	212°
	325°-360°
	SPECIAL SP #1
	PENDANT
	PENDANT NOT INSIDE DUCT
	UPRIGHT HEAD INSIDE DUCT
	GATE
	GLOBE
	ANGLE
	SCREW CHECK
	FLANGED CHECK
	U/G GATE (W/INDIC POST)
	U/G GATE (W/VALVE BOX)
	RISER THRU FLOOR
	VERTICAL BEND (NOT RISER)
	SWING JOINT
	PIPE HANGER LOCATION
	CAP
	NIPPLE OR PIPE UP OR DOWN

HYDRANT SYMBOLS		DEVICE SYMBOLS		FITTING SYMBOLS		VALVE SYMBOLS	
	TWO-WAY		NON-FREEZE VALVE ASSY		RISER THRU FLOOR		GATE
	THREE-WAY		ALARM VALVE IN RISER		VERTICAL BEND (NOT RISER)		GLOBE
	DRY-PIPE VALVE (DIFFERENTIAL TYPE)		INSPECT'S TEST CONN'TN		SWING JOINT		ANGLE
	NEW STEEL PIPE		DRY-PIPE VALVE (W/QUICK OPEN DEVICE)		PIPE HANGER LOCATION		SCREW CHECK
	NEW UNDERGROUND		WATER MOTOR GONG		CAP		FLANGED CHECK
	EXIST'S UNDERGROUND				NIPPLE OR PIPE UP OR DOWN		U/G GATE (W/INDIC POST)
							U/G GATE (W/VALVE BOX)



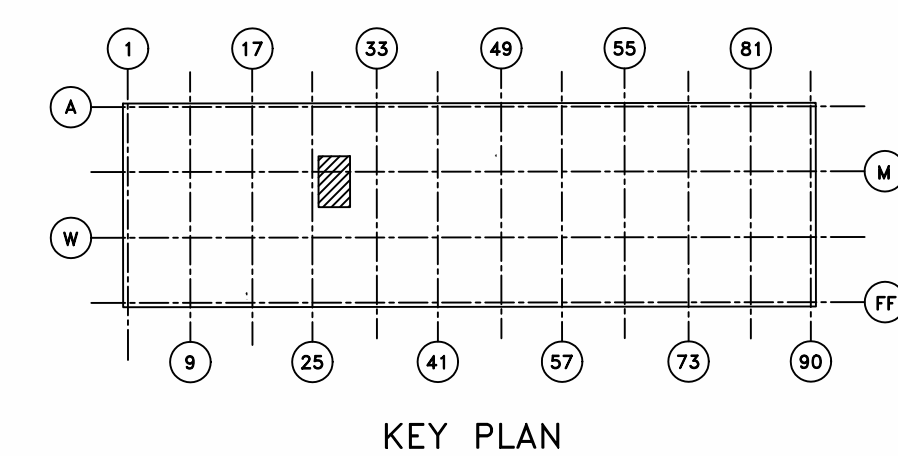
SPRINKLER LAYOUT - GROUND FLOOR
UNDER DUCTS
SCALE 1/8" = 1'-0"

DEMO NOTES

1. ABANDON IN PLACE, MAY BE REMOVED AS NEEDED.
2. CUT, CAP 6" SPRINKLER MAIN AT A CONVENIENT HEIGHT ABOVE CELL FLOOR.
3. REFER TO TFR-SE-2016-0298 AND TFR-SE-2016-0275 FOR ANY ADDITIONAL MATERIAL TO BE ORDERED.
4. FME CAP ANY CUTS IN ABANDON SYSTEMS.
5. SPRINKLER SYSTEMS SHALL NOT BE REMOVED UNTIL APPROVED BY THE DEPARTMENT OF ENERGY.

AUTO SPRINKLERS (COUNT)

	212°	-
	325°-360°	-
	SPECIAL	-
	SPECIAL	-
TOTAL HEADS THIS SHEET		



DESIGN MANAGER:
APPROVAL AND DATE:

NOTE:
SPRINKLER HEADS LOCATED ABOVE
THE EXHAUST DUCTS HAVE BEEN
REMOVED AND PLUGGED.

NOTE:
SPRINKLER HEADS SHOWN IN MOTOR
EXHAUST DUCT BRANCHES NOT INSTALLED

This document has been reviewed and is
UNCLASSIFIED and NOT UCON. This review
does not constitute clearance for public
release.
#192 *DIG. SIG.
Authorized Derivative Classifier Date

BASE DOCUMENT: X-330SP 5-4649 REVISION 3 POOR QUALITY ORIGINAL CAD OVERLAY

A01 CFC PER ESO E6663-001		DRAWING TITLE		*DIG SIG	
3 AS-BUILT FOR ESO #E2931		DRAWING DATE		DATE	
2 APPROVED FOR RELEASE PER ESO E2162		OPERATING CONTRACTOR		DATE	
1 ADDED SPRINKLER HEAD PROJ #11312		DATE		DATE	
WAS REV'D		DATE		DATE	
ISSUE PURPOSE		BY		DATE	
<p>UNITED STATES ATOMIC ENERGY COMMISSION ARTHUR G. MCKEE & COMPANY INDUSTRIAL ENGINEERING DIVISION - CLEVELAND OHIO CONTRACT NO. AT (40-1) 2138</p>					
<p>391 DRAWING TITLE SPRINKLER PLAN SYSTEM 25 AT GROUND FLOOR</p>					
DRAWING APPROVED - DATE		DRAWING APPROVED - DATE		DRAWING APPROVED - DATE	
J. D. WILKERSON		L. H. JACKSON		L. H. JACKSON	
ARCHITECT ENGINEER		OPERATING CONTRACTOR		A. E. C. ENGINEER	
DATE		DATE		DATE	
3/9/58		TW		5/23/58	
DESIGN		APPROVED		DATE	
E. E. C.		DATE		DATE	
PROJECT		BUILDING		SHEET	
PORTSMOUTH		X-330SP 5-4649		A01	